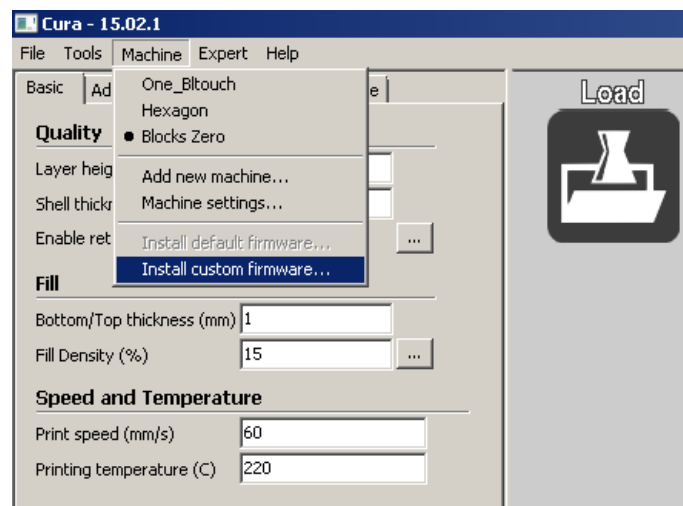


## ===== Português =====

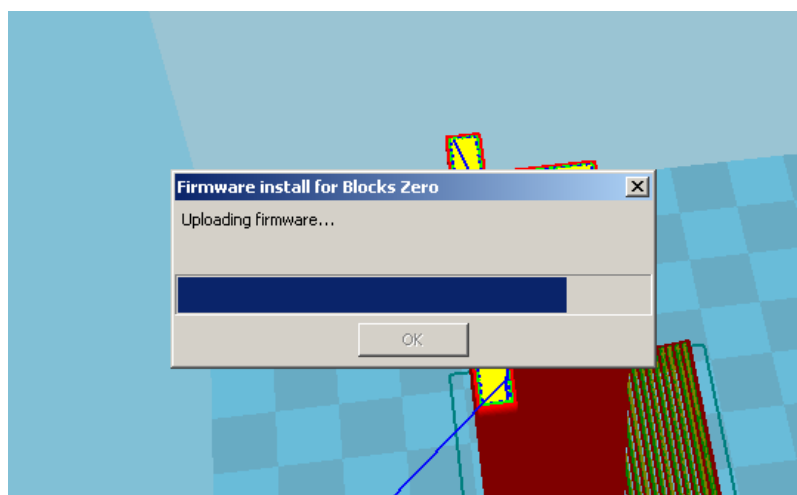
### Actualização de Firmware update – Impressoras Blocks

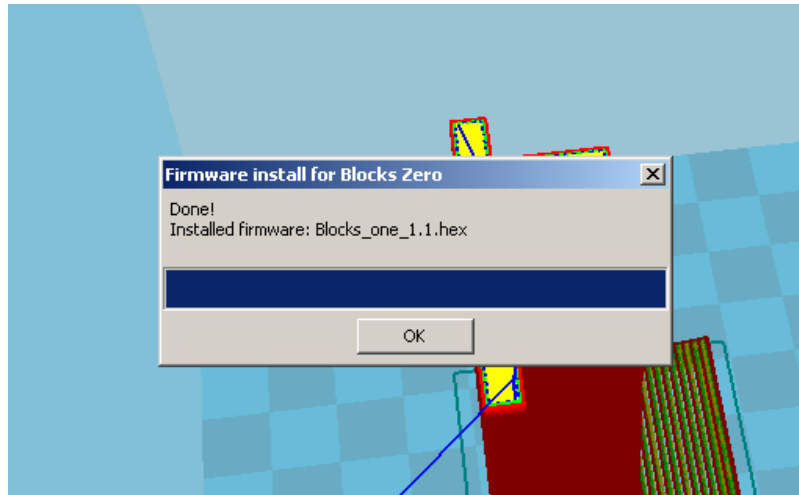
#### Actualização:

1. Confirme que tem o Cura 15.02.1 instalado. Caso não tenha, faça o download e instale [Win](#) / [Mac](#)
2. Faça o download do ficheiro HEX a partir do nosso website.
3. Ligue a impressora 3D ao computador usando o cabo USB.
4. Execute o Cura e seleccione o menu "Machine" -> "Install custom firmware"



5. Seleccione o ficheiro HEX transferido.
6. Espere pelo upload e quando terminar, pressione "OK"





## **Changelog:**

### V1.2.1:

- Corrigido o bug de homing após impressão

### V1.2:

- Corrigido o bug de comunicação USB
- Baudrate alterado para 250000

### V1.1:

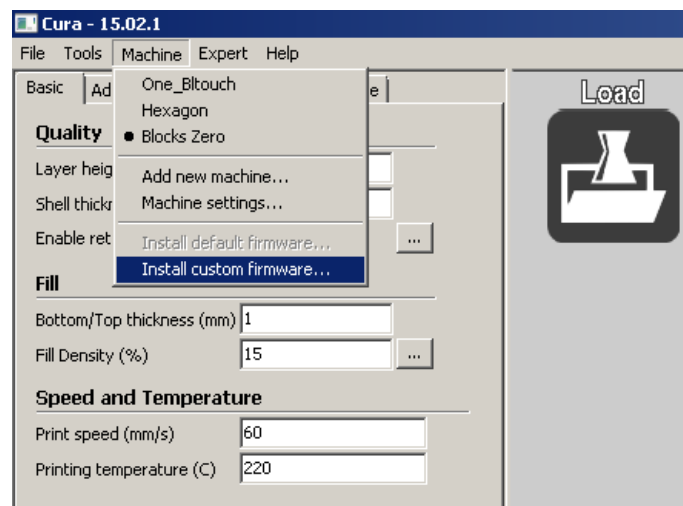
- Novas rotinas de load/unload filament
- Adicionada a opção para limpar o nozzle antes do nivelamento da plataforma (Blocks one)
- Adicionadas medidas de segurança térmicas
- Possibilidade de detectar final do filament (necessita de imprimir um extruder novo e acrescentar um microswitch)
- Direcção de rotação do LCD invertida

## ===== English =====

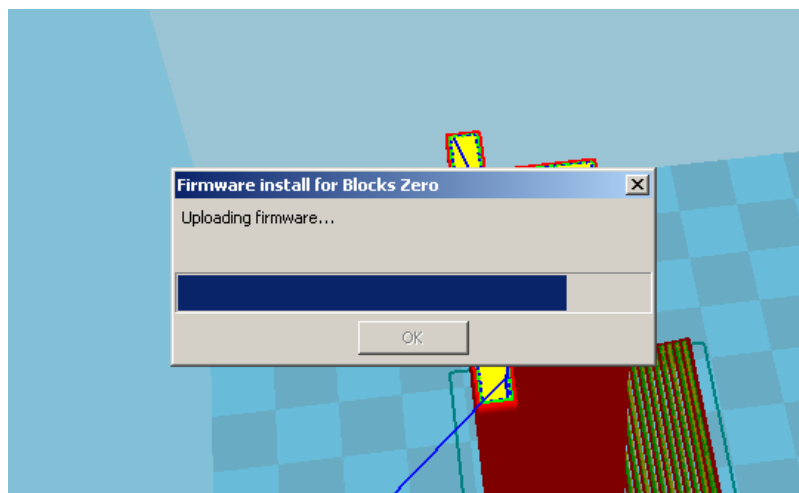
### Firmware update - Blocks printers

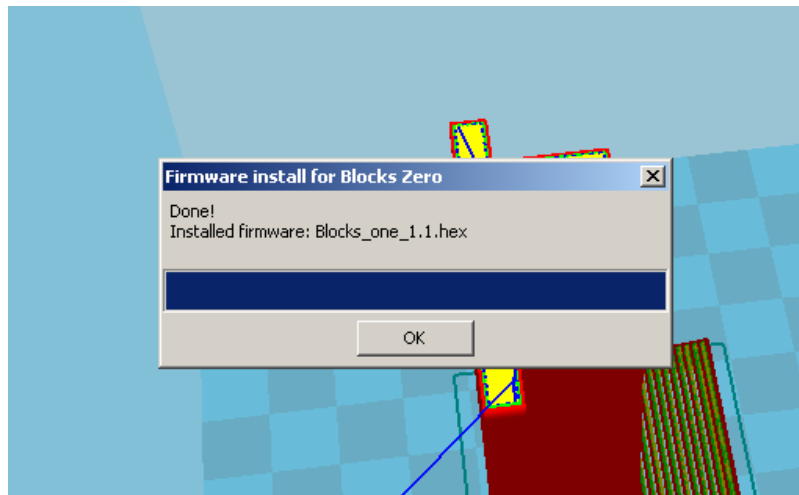
#### Updating the firmware:

1. Make sure you have Cura 15.02.1 installed. In case you don't, download and install it from here: [Win](#) / [Mac](#)
2. Download the HEX file from our Github website.
3. Connect the printer USB cable to your computer.
4. Open Cura and select menu "Machine" -> "Install custom firmware"



5. Select the downloaded HEX file.
6. Wait for the upload to finish and press "OK"





## **Changelog:**

### V1.2.1:

- Homing after print bug solved

### V1.2:

- USB communication bug solved
- Baudrate changed to 250000

### V1.1:

- New load/unload filament routine
- Option to clean the nozzle before bed level
- Thermal runaway safety feature
- Filament runout (needs printing new extruder and adding a microswitch to work)
- Reversed direction of the LCD knob